

CATALOGUE
SPORT



**ATHLETICS
SPORTS
GYMNASTICS
SPORTS FURNISHINGS**



ALL
YOU
NEED IS
SPORTS



ABOUT US

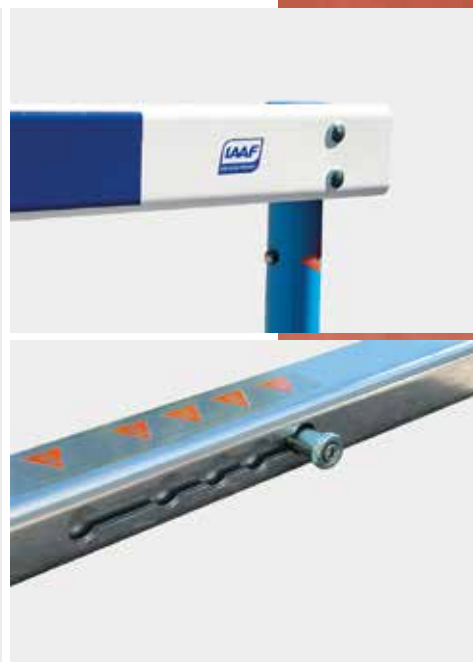
LAUSÍN Y VICENTE, S.L. is a company that designs, manufactures and trades an extensive range of products to install in sports facilities both nationally and internationally. We are focused on satisfying the needs of our customers and other interested parties, assuring the high quality of our products. We are present in several countries around the world, where we are supplying equipment for athletics tracks, multisport courts, gyms, schools and other sports facilities.

ATHLETICS
SPORTS
GYMNASTICS
SPORTS FURNISHINGS

03
23
53
67



ATH LET ICS



Aluminium race hurdles. Competition

IAAF Certificate N° E-14-0819

The base is made of aluminium profiles, with rectangular section and rounded edges. They are equipped with counterweights inside, with an automatic 5-position locking system corresponding to the five different standard heights.



Scan QR code for
more information



Race hurdles

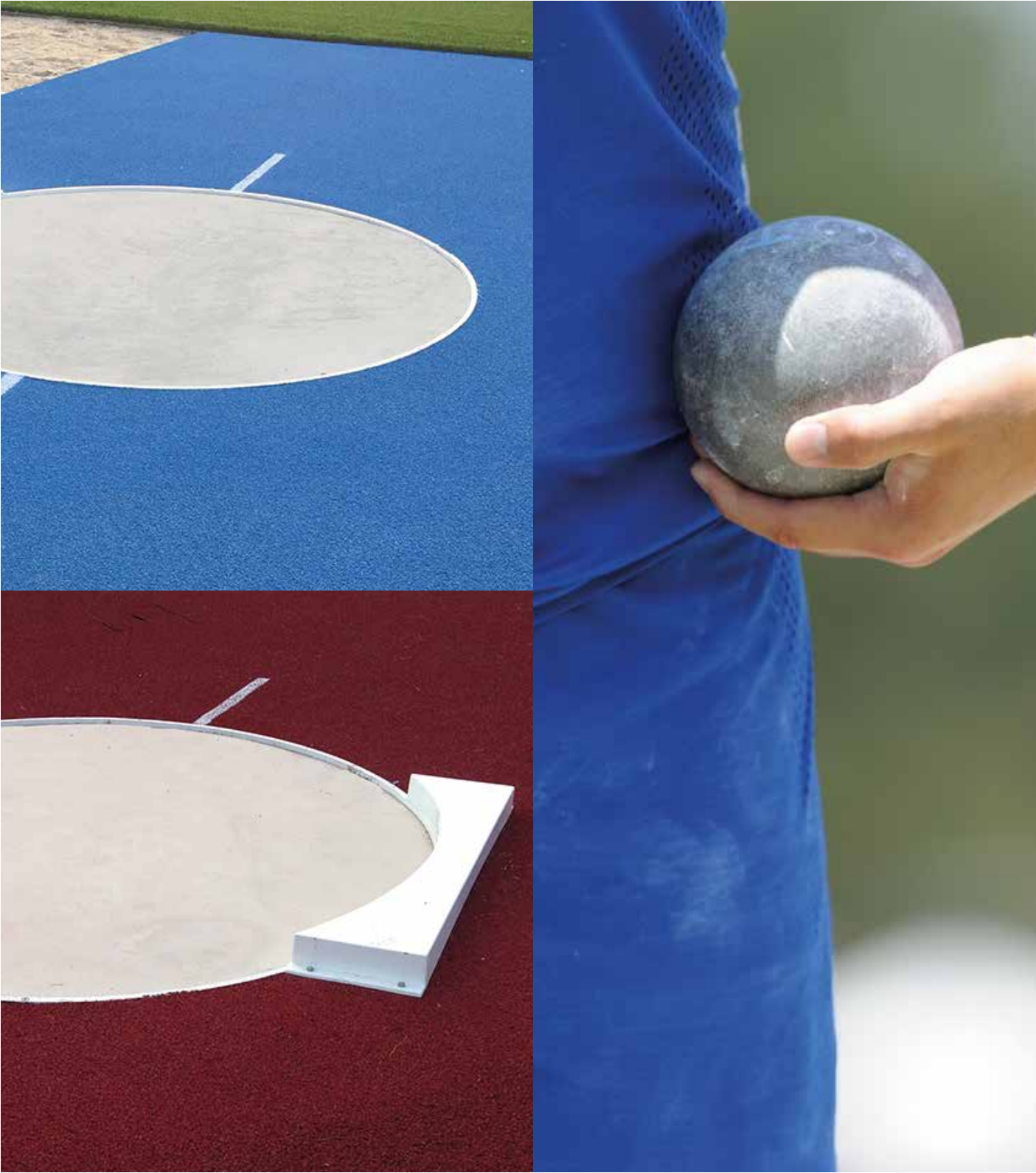
IAAF Certificate No. E-12-0667 / E-20-1061

Manufactured in 127x127 mm square section striped pinewood with round top edges lacquered in black and white squares. Metal tubes painted with black epoxy paint.



**Scan QR code for
more information**





Shot put/hammer circle

World Athletics Certificate No. E-12-0669

Made of calibrated plate curved section 15x20 mm to form the 2.135 mm inner diameter ring. The ring is formed by six galvanised modules and is subsequently painted in white.



Scan QR code for
more information

Shot put stop board

World Athletics Certificate No. E-12-0668

Made of fibreglass. Highly resistant to intensive use and adverse climatic conditions. Supplied with the required accessories to be fastened to the ground. Circle not included.



Scan QR code for
more information



Hammer/discus cage

World Athletics Certificate No. E-12-0687

The cage comprises six tubes of 7.20 m, four starting posts of 10.20 m and two mobile doors of 10.20 m with two crossbars of the same material, of galvanised steel tubing, each section 90x90x3 mm. Each tube has a winch to raise the net. All posts are joined by a telescopic tube with a 38 mm diameter round section. The cage is fixed to the ground by 100x100x3 mm and 80 cm depth anchors, six of which are single for 7.20 m posts and four are double for 10.20 m posts. 5 mm knotless polypropylene yarn net (at customer's request) with green or black 45x45 mm mesh. The assembly can withstand a wind resistance of 66-138 km/h with the mounted net. In stronger wind, the structure may be deformed and even bent, so the net should be completely removed.



**Scan QR code for
more information**



Competition landing area high jump

World Athletics Certificate No. E-17-0913

Landing area

Size: 6000x4000x700 mm. The set is made of three independent blocks manufactured in polyurethane. Standard colors: blue and yellow (other colors upon request).



Scan QR code for more information

Steel tube support platform

Steel tube support platform for 6000x4000 mm landing area, manufactured in 40x20 mm galvanised steel tubing.

Weather cover

Cover made of laminated canvas covered with PVC. Essential to protect the outside landing area.



High jump stands Competition

World Athletics Certificate No. E-19-0995

Competition high jump stands, designed and manufactured in compliance with WA international athletics regulations. Tubes are manufactured with a 90 mm round section extruded aluminium profile and are lacquered in white.



Scan QR code for more information



Adjustable galvanised/stainless steel take-off board

World Athletics Certificate No. E-12-0653

Dimensions: 1220 x 300 x 100 mm.

Metal support

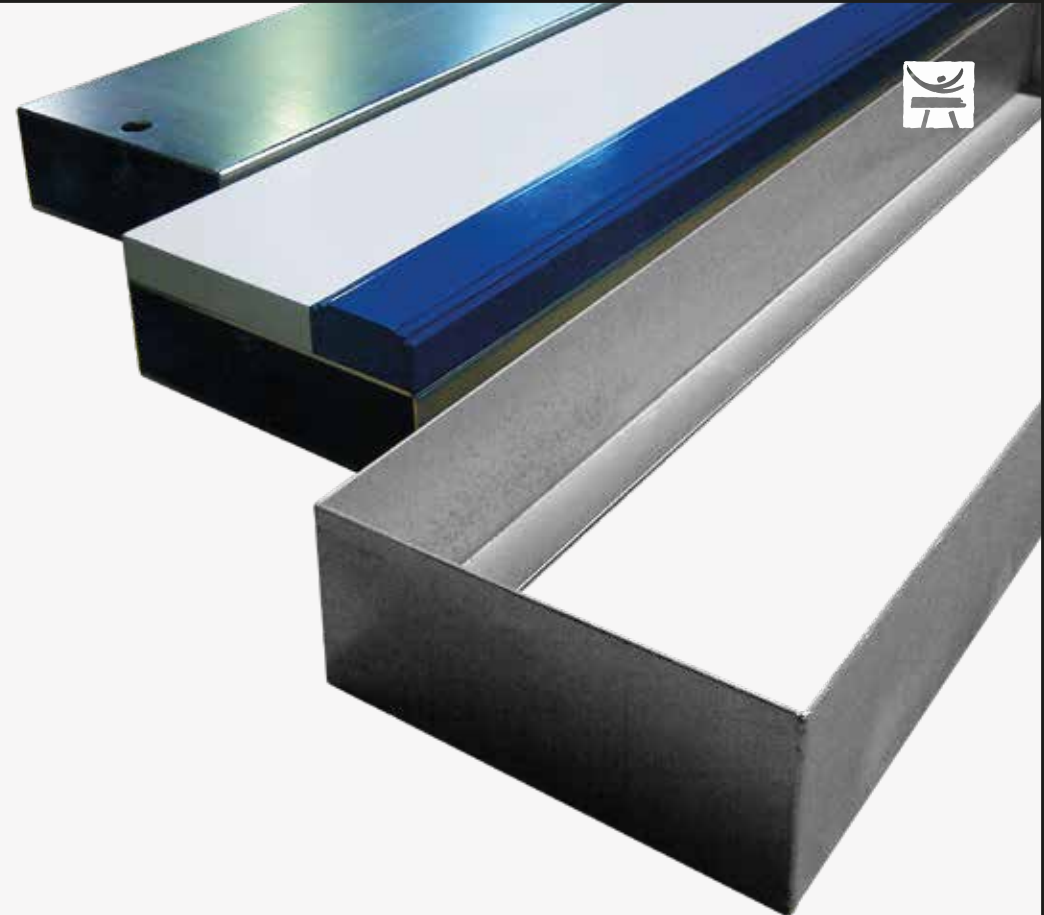
Designed for housing the take-off board or its corresponding lid. It is made of 2.5 mm galvanized or stainless steel.

Take-off board

Comprises a metal structure, which supports both the blue-lacquered plasticine insert and the take-off board manufactured in white lacquered wood.

Lid for take-off board

The lid for the take-off board is composed of a metal structure prepared for the placement of synthetic pavement on top. The metal structure is manufactured in 2.5 mm galvanised steel or stainless steel.



Scan QR code for
more information



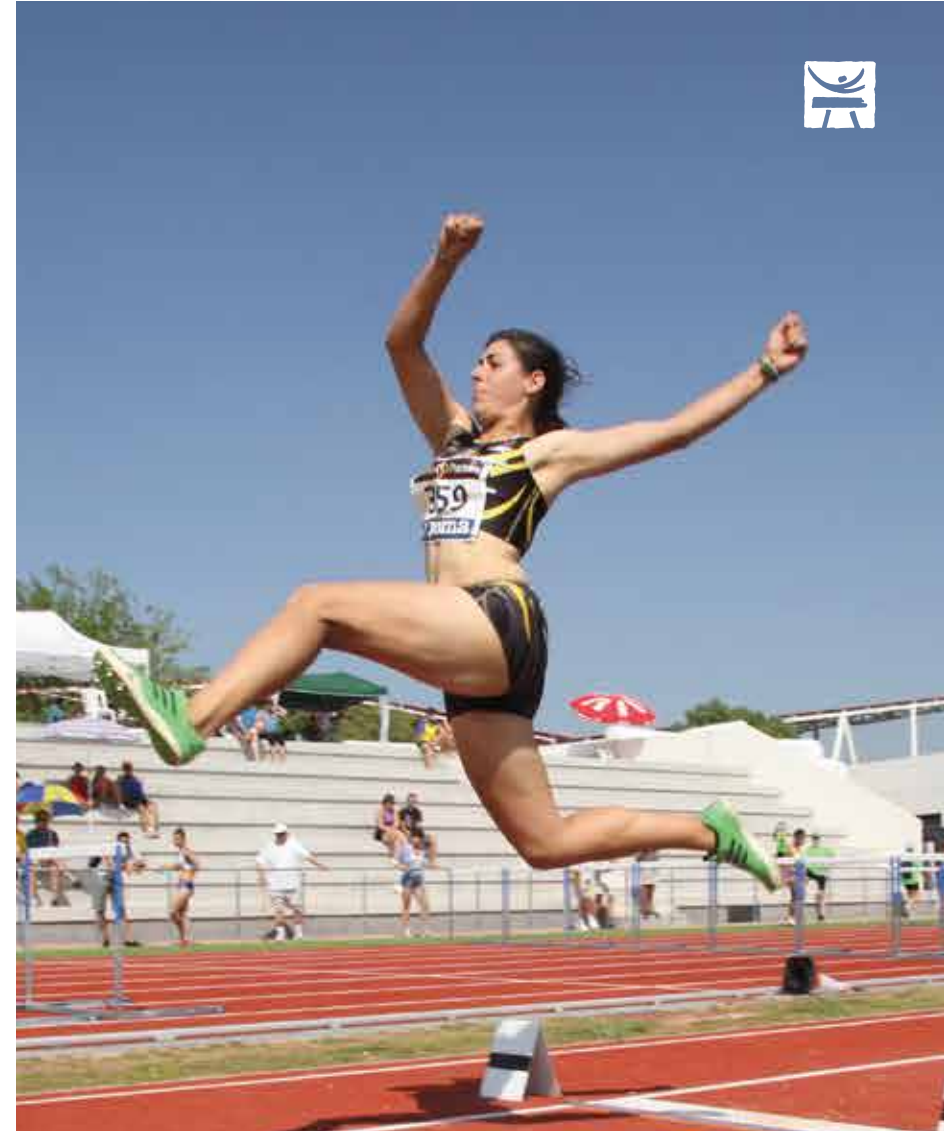
Corner piece of the pit, canvas sandpit cover and sandpit rakes

Corner piece of the pit

Made of solid pinewood and lacquered in white. 63x63 mm cross section with a rounded edge. 2.7 m long. To be placed at one end of the long and triple jump sandpit.

Canvas sandpit cover

Pit cover made of laminated canvas covered with PVC. Metal eyelets around the entire perimeter to pass an elastic band through to fix the fabric to the sandpit perimeter. Price per m².



Sandpit rake and levelling device

Manufactured in sheet metal, cut with laser with metal handle. One side is toothed for raking and the other is prepared for smoothing.



Scan QR code for
more information

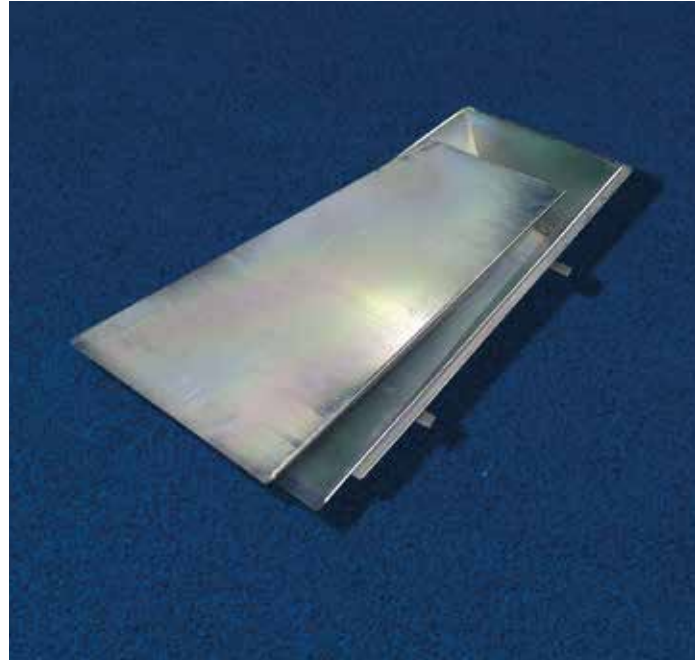
Aluminium pole vault stands. Competition

World Athletics Certificate No. E-21-1135

Tubes are manufactured with a 125 mm round section extruded aluminium profile, and are fixed to a mobile metal base with a wheel system.



Scan QR code for more information



Pole vault landing area

World Athletics Certificate No. E-17-0914

Size: 8000x6000x800/550 mm. The set is made of six independent blocks manufactured in polyurethane. Standard colors blue and yellow (other colors upon request).



Scan QR code for more information



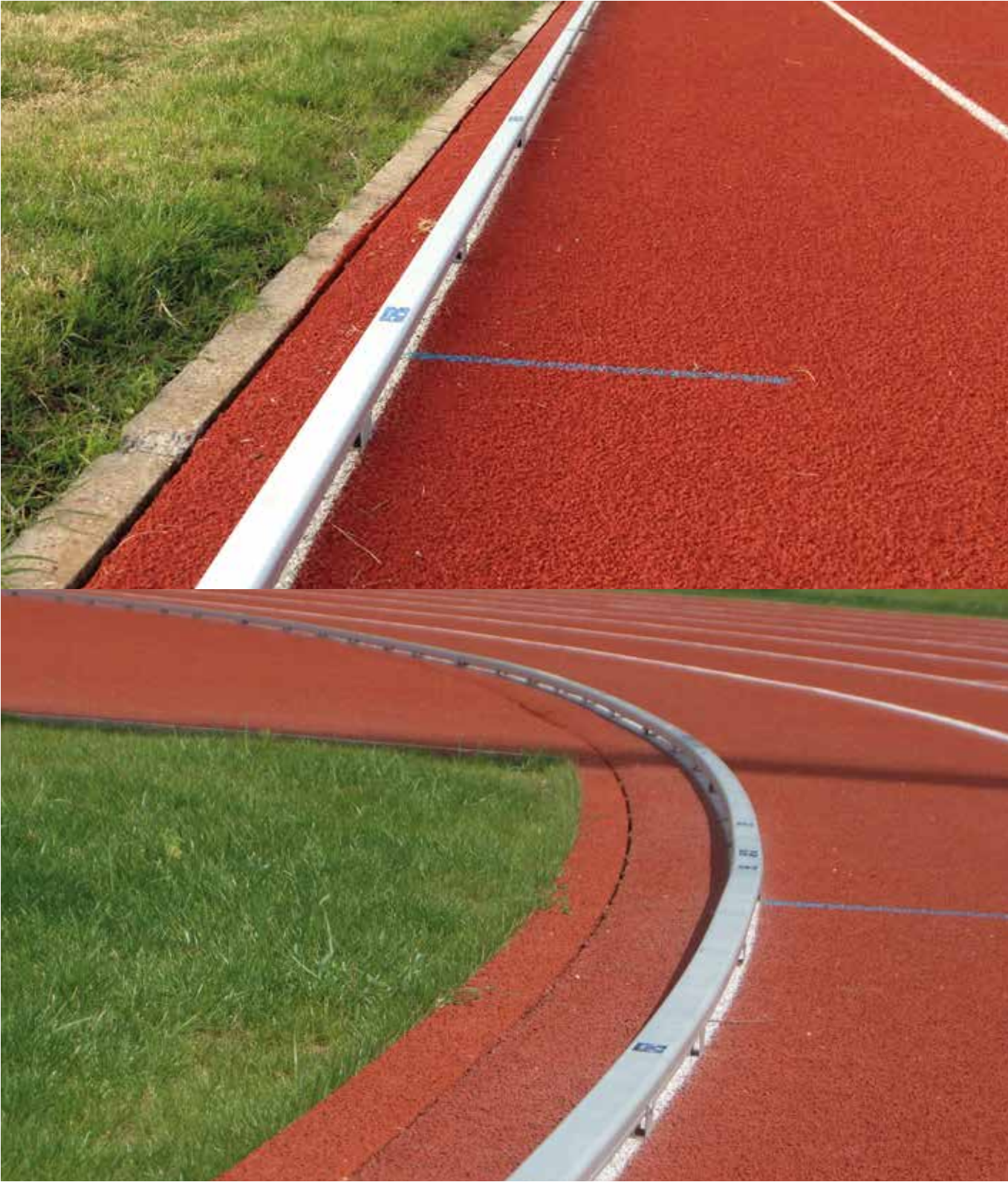
Pole vault box

World Athletics Certificate No. E-12-0652

Metal box and lid made of folded and welded 2.5 mm galvanised steel. The lid is prepared for synthetic pavement to be placed on top.



Scan QR code for more information



Aluminium track curbing for running track

IAFF Certificate No. E-12-0651

Both the curbing profile and the ground support profile (called pegs) are manufactured from extruded aluminium profile. May be supplied in two finishes: lacquered in white (subject to degreasing to guarantee the priming of the colour on the aluminium profile) or anodized silver. The curbing may be fixed to the running track in two possible ways: permanent or removable. Price per linear meter.



Scan QR code for
more information



SPO
RTS



11-a-side football goals

Designed according to European standard UNE-EN 748. Frames in extruded aluminium pipe with an oval cross-section or a round cross-section; lacquered in RAL 9010 white. Regulatory measurements: 7,32 x 2,44 m. Corners joints to join post and crossbar together in galvanized square steel pipe to make the goal highly robust and durable.



Scan QR code for
more information

11-a-side football back posts

Made in galvanized steel pipe (painted in white or other colours available on request). Used to tighten the upper section of the netting by means of ties; creates a "box" effect. Length: 3 m. Anchor points included: 50 cm deep.



Scan QR code for
more information





7-a-side football goals

Designed according to European standard UNE-EN 748. Frames in extruded aluminium pipe lacquered in RAL 9010 white. Regulatory measurements: 6 x 2 m. With the folding goals, the rear structures are made from hot dip galvanized steel pipe, and the frame of the goals can be adjusted in accordance with the width of the pitch (extendible pipe: 1,5 – 2,4 m). Each goal comes with two 125mm diameter rubber wheels for the side.



Scan QR code for
more information

Combination football/rugby posts



Scan QR code for
more information

Football – Rugby goals designed to play both sports using the same equipment on playgrounds for training . Regulatory measures of football goals are 7,32 x 2,44 m. The height of the posts of rugby goals is 6,40 m according to the minimum Standard requirements.



Competition futsal goals

Made in accordance with regulation UNE-EN 749. Posts and crossbars made from aluminium; painted blue and white. Dimensions: 3.00 x 2.00 x 1m Fixed back supports for anchoring (overturn prevention) in 32 mm rounded galvanized steel profile.



Scan QR code for more information

Futsal goals

Made in accordance with regulation UNE-EN 749. Posts and crossbar in aluminium; metal painted in white and red (other colours available under petition). Dimensions: 3.00 x 2.00 x 1 m. Fixed or folding back supports with side openings for anchoring (prevention of tipping) in 32 mm rounded galvanized steel profile.



Scan QR code for more information



“Tauro” anti-vandal fixed team shelter

Designed and manufactured to be used mainly in outdoor sports facilities and to minimize the effects of vandalism. Back and side sheets are made in galvanized plate.



Scan QR code for more information



“Basic” fixed team shelter (w/o footrest)

Made in galvanized steel section with 4 mm thick transparent polycarbonate sides (for visibility) and rear translucent cellular polycarbonate back plates (6 mm thick). The bench structure is completed with individual seats (with backrests) in polypropylene; a continuous wooden bench seat can also be supplied. The modular structure means that it can be extended when necessary. Height inside: 2.00 m.



Scan QR code for more information



Spectator barrier system for football pitches

Made in 60 x 2 mm rounded galvanized steel pipe.



Scan QR code for more information



“Escorpio” fixed team shelter

Bench for substitute players designed and manufactured to be used mainly in outdoor sports facilities. The metal structure of the bench is in galvanized steel section. The side sheets come in 4 mm thick transparent polycarbonate sheets. The back sheet comes in 6 mm thick colourless polycarbonate sheets.



Scan QR code for more information





Ball stop posts and net system (football pitches)

Made in rounded structural steel pipe (80, 90, 100 or 120 mm diameter), hot dip or aluminium galvanized. Tubular zinc-coated anchors or with foundation structures to embed anchors in the ground (depending on item No.). The connection between first and last posts is achieved through 38 mm bars. The gaps are reinforced using galvanized steel cables creating a diagonal cross shape. Galvanized cable between the intermediate posts both at the top and bottom.



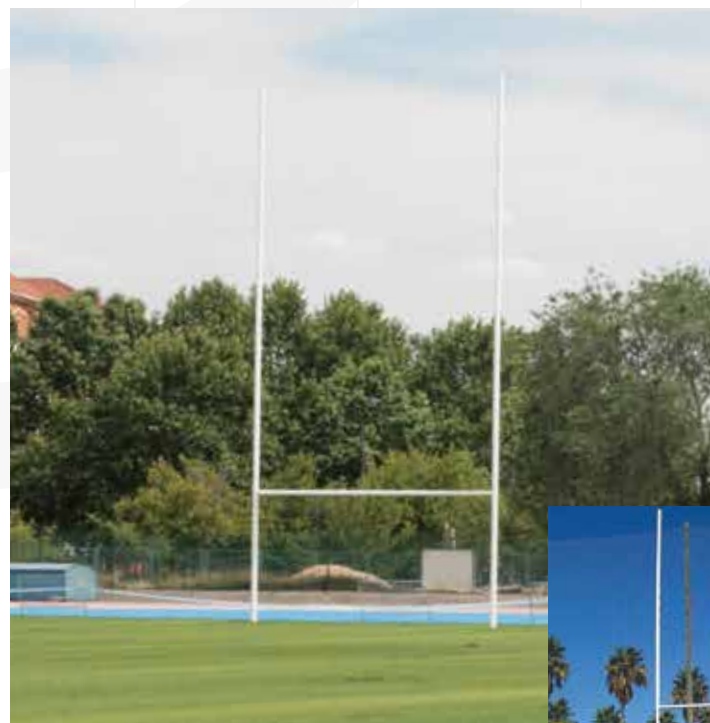
Scan QR code for
more information

120 mm rugby posts



Scan QR code for
more information

120 mm diameter round cross-section aluminium uprights and 100 mm crossbar; painted white with epoxy paint and kiln-dried. Regulatory measurements: 11,80 m (3 + 8.8 m) x 5,6 m. Price per set (2 units).





“Bari” multi-tube ceiling mounted basketball goals

The BARI multi-tube hanging basketball goal was designed to be installed hanging from the ceiling at any sports facilities. All the dimensions and specifications for this product have been drawn up in line with the requirements of European Standard EN-1270.



Scan QR code for
more information





“Palermo” wall-mounted side-folding basketball & mini-basketball goal

The folding basketball and mini-basketball goal was designed to be installed on the wall at any sports facilities using a frame affixed to the wall or pre-existing structure. Both of these need to be adapted for this specific use. All the dimensions and specifications for this product have been drawn up in line with the requirements of European Standard EN-1270.



Scan QR code for more information

“Módica” Single tube ceiling mounted basketball goals

The “Módica” single tube hanging basketball goal was designed to be installed hanging from the ceiling at any sports facilities. All the dimensions and specifications for this product have been drawn up in line with the requirements of European Standard EN-1270.



Scan QR code for more information





“Milan” school basket and mini-basket goals (with base)

The basketball and mini-basketball goal with base was designed to be used in installations such as schools, municipal sports centres, residential areas and sports clubs. It can be used both outdoors and indoors in sports centres. The goal structure consists of two parts: A central post + arm made from 100 mm or 150 mm square structural pipe. The mobile version comes with 4 wheels. Projection: 1,65m or 2,25m.



Scan QR code for more information

“Roma” basketball goals with movable base

Basketball goal with base designed to be used in installations such as schools, municipal sports centres, residential areas and sports clubs. It can be used both outdoors and indoors. The goal structure consists of the following components: Front post, back post, main arm, frame and base structure with wheels. Projection: 1,65m.



Scan QR code for more information





“Nápoles” fixed school basketball and mini-basketball goals

Ideal for outdoor courts as they are designed to be left in place all year round. Recommended for schools, municipal, sports centres, estates and sports clubs.



**Scan QR code for
more information**



“Merano” and “Nogara” free-standing competition basketball goals

The “Merano” and “Nogara” free-standing goal was designed and created to be used in all sports facilities. Aside from its uniquely innovative design, the key features of this item are how easily it can be folded away and transported. All the dimensions and specifications for this product have been drawn up in line with the requirements of European Standard EN-1270.



**Scan QR code for
more information**



Handball goals

Made in accordance with regulation UNE-EN 749. Posts and crossbar in aluminium or metal painted in white and red (other colours available on request).



Scan QR code for more information

Aluminium volleyball posts

Made in anodized aluminium section with a 120 mm diameter round cross-section reinforced inner; in accordance with European Regulation EN 1271. Net height is adjustable (2,00 to 2,43 m) using a flywheel (with bolt).

The movable version comes with a metal structure painted white with epoxy and kiln-dried; it has a 20 kg (approx.) counterweight incorporated and two 80 mm diameter grey rubber wheels, which do not mark the flooring.



Scan QR code for more information





120 mm aluminium beach volleyball competition posts

Made in aluminium profile, yellow, with a 120 mm round cross-section diameter. Adjustable height: 2 and 2,43 m (regulatory), using outdoor trolley. Net tightened within the posts using a pulley system. Sockets for embedding included. Post anchor system - structure buried under the sand (optional). Price per set (w/o net).



Scan QR code for more information

Aluminium tennis and paddle posts. Round cross-section

Made in anodized aluminium profile with a 120 mm diameter round cross-section with reinforced inner; in accordance with European Regulation EN1510. Tighten the net using a spindle and crank. The posts are equipped with rubber caps at either end to protect the floor.



Scan QR code for more information



Hockey goals

Made according to the requirements detailed in European Regulation UNE-EN 750. Made in special 6082 aluminium alloy which has undergone T6 thermal treatment to make it more robust and resistant to impacts. Dimensions: 3,66 x 2,14 m/Depth at top: 0,9 m/Depth at base: 1,2 m.



Scan QR code for more information



Roller hockey goals

75 mm diameter round cross-section metal posts and crossbars. Regulatory inner measurements: 1700 x 1050 mm. Depth: 1100 mm (per current rules). For school model is painted in orange. Base includes a ramp to raise the ball so it stays in the netting. Price per set (w/o nets).



Scan QR code for more information





GYMNAS TICS



Birch or pine Swedish bench

Top quality varnished wood. Seat width: 0,28 cm. Base width: 0.28 cm. Height: 0,35 m. Reinforced with metal angle plates. Includes fastener/hook for wall bars. Nonslip blocks on bases.



Scan QR code for
more information



Scan QR code for
more information



Ballet bar

Varnished yellow pine. Optional diameter: 55 or 45 mm. Price per linear meter.



Scan QR code for
more information

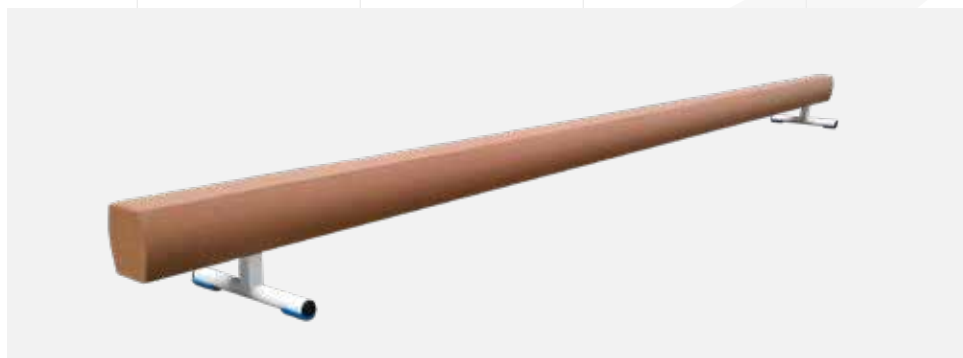


Aluminium initiation balance beam

Aluminium profile upholstered in carpet or synthetic leather. Oven-painted fixed metal supports. Nonslip base. Length: 3 m and 5 m. Height: 0.30 m. Regulation measurements.



Scan QR code for more information



Balance beam

Aluminium profile carpet or synthetic leather upholster. Oven-painted adjustable metal supports from 70 to 120 cm, at 5 cm intervals. Easy adjustment. Nonslip base. Length: 5 m. Regulation measurements.



Scan QR code for more information



Pommel horse with metal legs

Wooden body, upholstered with natural or synthetic leather on foam rubber agglomerate D-200. Metal legs with metal extension, rubber nonslip feet adjustable every 5 cm by means of "click" and setscrew in one of the feet. Adjustable fibre pommels, chain and tightening device included. Transport system included.



Scan QR code for
more information

Double wall bars

Top quality wood: sides of varnished yellow pine, 16 oval section beech bars. Metal fastening to screw to the wall included. Size: 2600x2000 mm. UNE-EN 12346.



Scan QR code for
more information

Single wall bar

Top quality wood: sides of varnished yellow pine, 16 oval section beech bars. Metal fastening to screw to the wall included. Size: 2600 x 1000 mm. UNE-EN 12346.



Scan QR code for
more information





Spring mini-tramp

Galvanised metal folding structure. Nonslip base. Nylon canvas platform reinforced by springs. Adjustable in height. Protector included. Size: 112 x 112cm or 125 x 125 cm.



Scan QR code for more information



Rubber-band mini-tramp

Galvanised metal folding structure. Nonslip base. Nylon canvas platform reinforced by rubber-bands. Adjustable in height. Protector included. Size: 112 x 112cm or 125 x 125 cm.



Scan QR code for more information

Pyramid vaulting box

Front and sides made of varnished pine back plate. Corners of varnished beechwood. Reinforced on the inside with oven-painted metal cross bars. 5 or 7 segments.



Scan QR code for more information



Straight vaulting box

Front and sides made of varnished pine back plate. Corners of varnished beechwood. Reinforced on the inside with oven-painted metal cross bars. 5,6 or 7 segments.



Scan QR code for more information



Vaulting buck with wooden legs

Wooden body upholstered in natural or synthetic leather over foam rubber agglomerate D-200. Wooden legs with metal extensions.



Scan QR code for
more information



Vaulting buck with metal legs

Wooden body upholstered in natural or synthetic leather over foam rubber agglomerate D-200. Metal legs with metal extensions.



Scan QR code for
more information





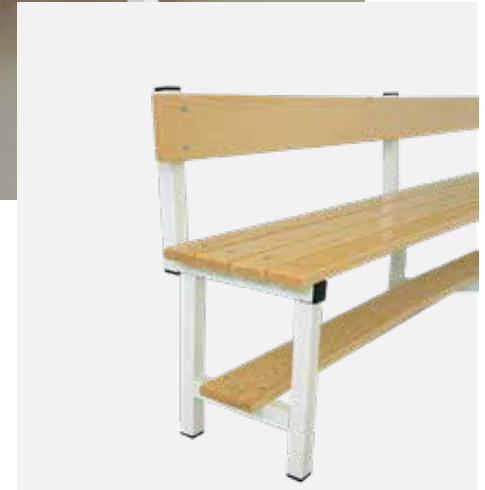
SPORTS *FURNI* *SHINGS*

Mural changing room benches

Metal structure in steel pipe painted in white with epoxy paint and kiln-dried. Top quality pine bench comprising three 90 mm wide x 25 mm strips. All the wood is varnished.



Scan QR code for more information



Changing room benches

Metal structure in 40 x 40 x 2 mm steel pipe painted in white with epoxy paint and kiln-dried. Top quality pine bench comprising four 80 mm wide by 25 mm thick strips and a crosspiece measuring 140 mm wide by 25 mm thick. All the wood is varnished.



Scan QR code for more information



Scan QR code for more information

Phenolic changing room benches

Single changing room bench made from a 12 mm thick compact phenolic material (under ISO 9001) from heat hardened resin, reinforced evenly with cellulose fibre. Manufactured at high temperature and pressure using special techniques to provide the panels with a colour that is an integral part of the material.



Scan QR code for more information



Phenolic changing room benches (with backrest and hanger)

Single changing room bench made from a 12 mm thick compact phenolic material (under ISO 9001) from heat hardened resin, reinforced evenly with cellulose fibre. Manufactured at high temperature and pressure using special techniques to provide the panels with a colour that is an integral part of the material. Glazed white metal hangers or stainless steel



Scan QR code for more information



Electrically fold-up dividing curtains

A robust system composed of high-quality materials for great durability over time. The screen is folded in a zigzag system and can be folded up to just 50cm. Options: All-canvas, mixed or all netting curtains.



Scan QR code for
more information

Removable grandstand

Removable galvanized metal structure comprising 2.5 m interlocking modules to create the length of grandstand required. The modules are comprised of side structures, walkways and a rear section, where some 40 x 2 mm square pipe profiles and some 40 x 2 mm plates are bolted into place to provide the stand with stability and rigidity.



Scan QR code for
more information



Horizontal wall protector

Wall protector made from PVC covered plastic-coated canvas and a polyurethane foam filling of different densities depending on what needs to be protected. The base or protector support may be in wood or simply attached to the wall to be protected.



Scan QR code for
more information





**WE ARE
MANUFACTURERS
SINCE 1974**



**EUROPEAN REGIONAL DEVELOPMENT FUND
A WAY OF MAKING EUROPE**

Lausín y Vicente SL within the framework of the ICEX Next Program, has had the support of ICEX and the co-financing of the European FEDER fund. The purpose of this support is to contribute to the international development of the company and its environment.



LAUSÍN
Y VICENTE
SOCIEDAD LIMITADA

www.lausinyvicente.com